

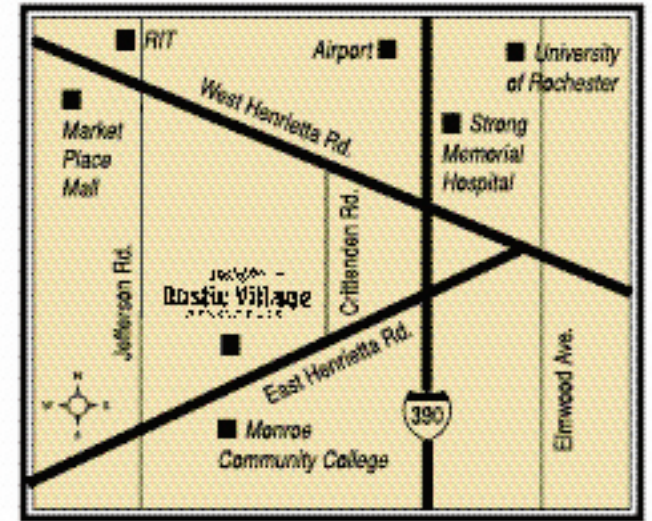
*Rustic Village*  
**Rustic Village**  
 APARTMENTS

Where good living begins.



Rustic Village Apartments offers one of the best locations you'll find anywhere—close to work, a wide array of cultural events, shopping of every kind, dining and entertainment and year round sports. We're close to countless services and products that make life easier and more enjoyable.

When you add it all up, you'll find that Rustic Village makes the perfect home for families, singles or seniors seeking the best value in better living.



**Getting to Rustic Village is easy.**

From the South: 390 North to exit 14, turn left onto East Henrietta Road. Travel north for approximately 1 mile, turn left onto East Squire Drive.

From the North: 590 South to 390 North, exit 16, turn left onto East Henrietta Road. Turn right onto Crittenden Road and turn left onto East Squire Drive.

From the West: 390 South to exit 16B, turn right onto East Henrietta Road and then follow above directions.

*Rustic Village*  
**Rustic Village**  
 APARTMENTS

**Where good living begins.**

999 East Henrietta Road  
 Rochester, New York 14623  
 (585) 424-4380

Fax (585) 272-7073

[www.rusticvillageapartments.com](http://www.rusticvillageapartments.com)



• APARTMENT COMMUNITIES •



EQUAL HOUSING OPPORTUNITY

## Come inside and you'll find:

- Spacious one and two bedroom apartments.
- Several floor plans to choose from.
- Heat and hot water included in all apartments.
- All kitchens equipped with garbage disposals and dishwashers.
- Custom verticle window treatments throughout.
- Plush wall to wall carpeting.
- Ceiling fan in dining area.
- Spacious rooms with an abundance of closet space.
- Convenient laundry facilities in every building.
- Extra individual storage area for all apartments.
- Secured intercom entries for your privacy.

## A selection of options to meet every need

One reason Rustic Village is such an ideal place to live is because of how accommodating we are. We offer options from flexible short term leases to fully furnished corporate suites, non-smoking buildings and two bathroom apartments. We even welcome small pets in established locations.

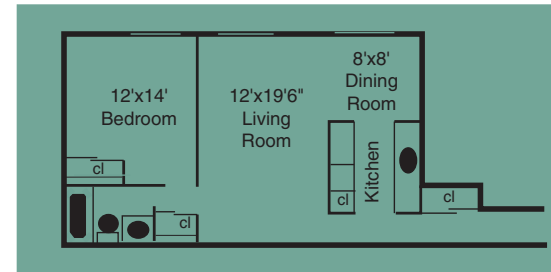
Our experienced and courteous staff want you to feel totally at home at Rustic Village Apartments. We know that extra attention to detail really matters—for your comfort, happiness and well being.

You'll find this attention in the lovely landscaping and the immaculate apartment you move into. In addition, our courteous management and prompt maintenance team offer 24 hour maintenance you can count on.

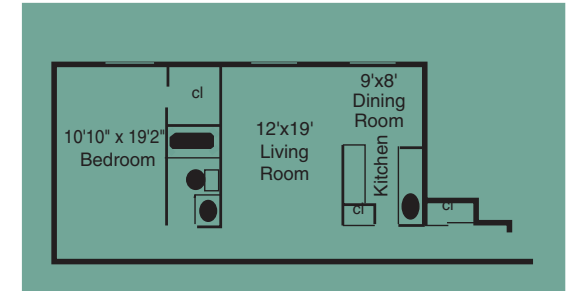
## Outside, you're close to everything:

- A large swimming pool, plus a wading pool, both surrounded with comfortable lawn furniture.
- Tennis, basketball, handball and two sand volleyball courts.
- Picnic area with barbecue grills.
- Newly constructed recreation park facility including Gametime—a custom designed play system for all ages.
- Miles of walkways and lawns for leisurely strolls.
- Adjacent to the 390 and 590 expressways and just minutes to downtown.
- Fantastic shopping at nearby Marketplace Mall and Southtown Plaza, plus plenty of wonderful restaurants close by.
- 24 hour resident assistance and emergency maintenance.
- Planned seasonal and holiday gatherings.
- State of the art Fitness Plex with private showers.
- Entertaining Center with applianced kitchen.
- Reading Library.
- Resident Fax and Copy Center.
- Free VHS/DVD Video Library.
- Resident Car Wash/Vacuum Station.
- Satellite TV capability in established buildings.

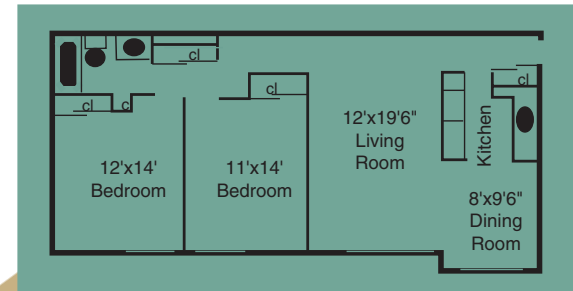
Close to Strong Memorial Hospital, as well as the University of Rochester, Rochester Institute of Technology, Monroe Community College and Empire Sports Center, with RTS and school bus stops throughout the complex.



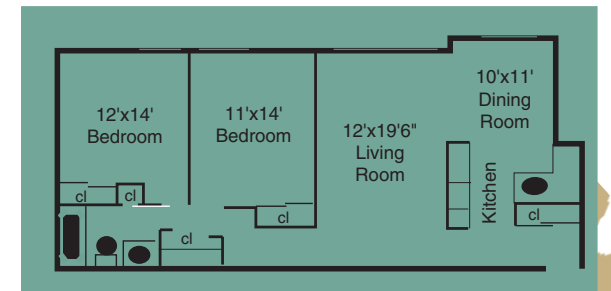
1 bedroom apartment (plan A)



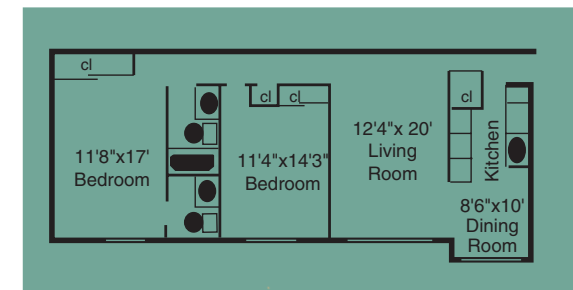
1 bedroom/extra large bedroom & walk-in closet (plan D)



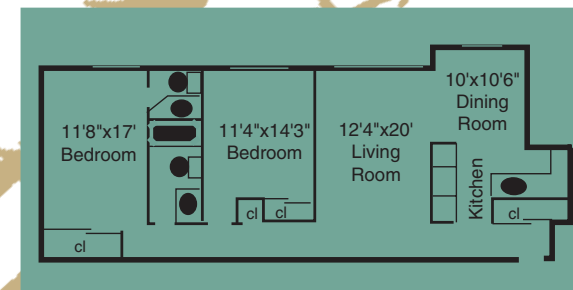
2 bedroom apartment (plan B)



2 bedroom/with extra large kitchen & closets (plan C)



2 bedroom/2 bath (plan E)



2 bedroom/2 bath with extra large kitchen & closets (plan F)



\* Room dimensions shown are approximate. Exact size may vary.